

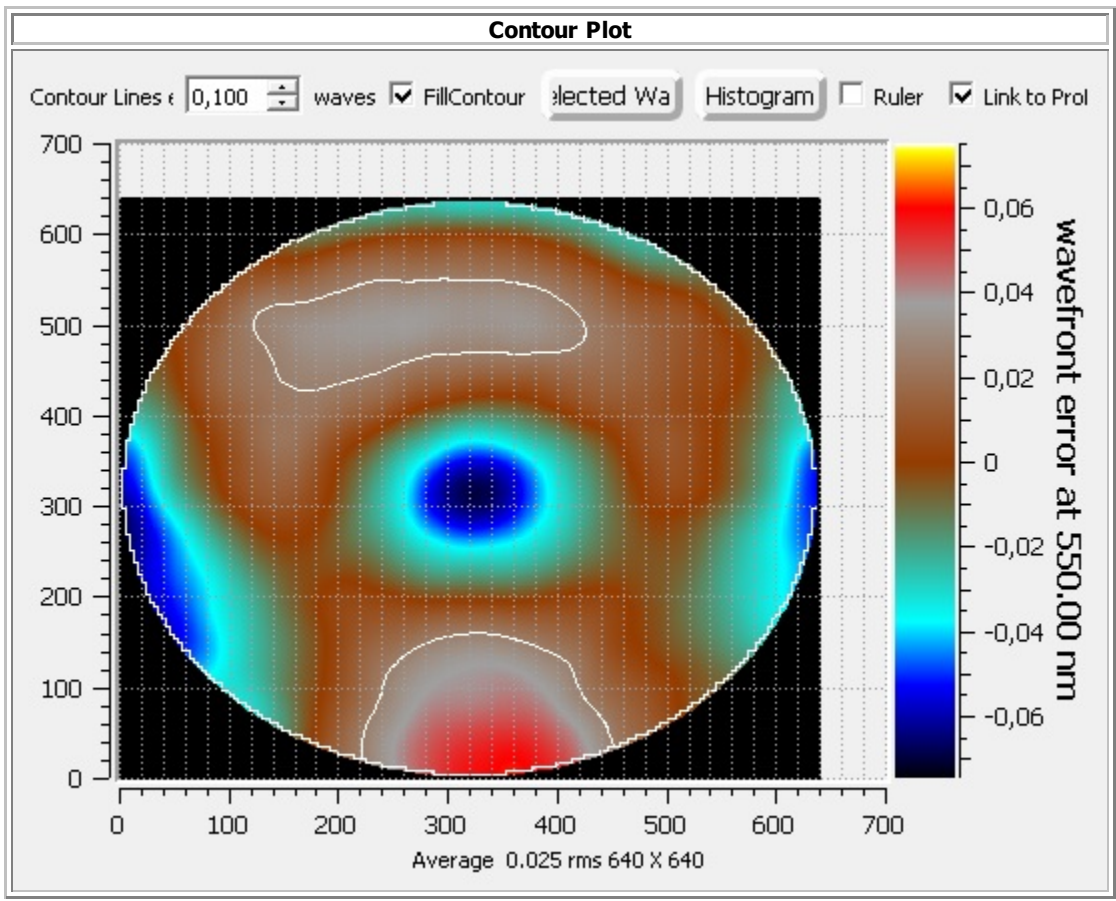
Interferometry Report for 81939 - Vixen AP 90/495 VSD90SS OTA

Fr Mrz 15 2024 15:40:26
DFTFringe Version:5.0

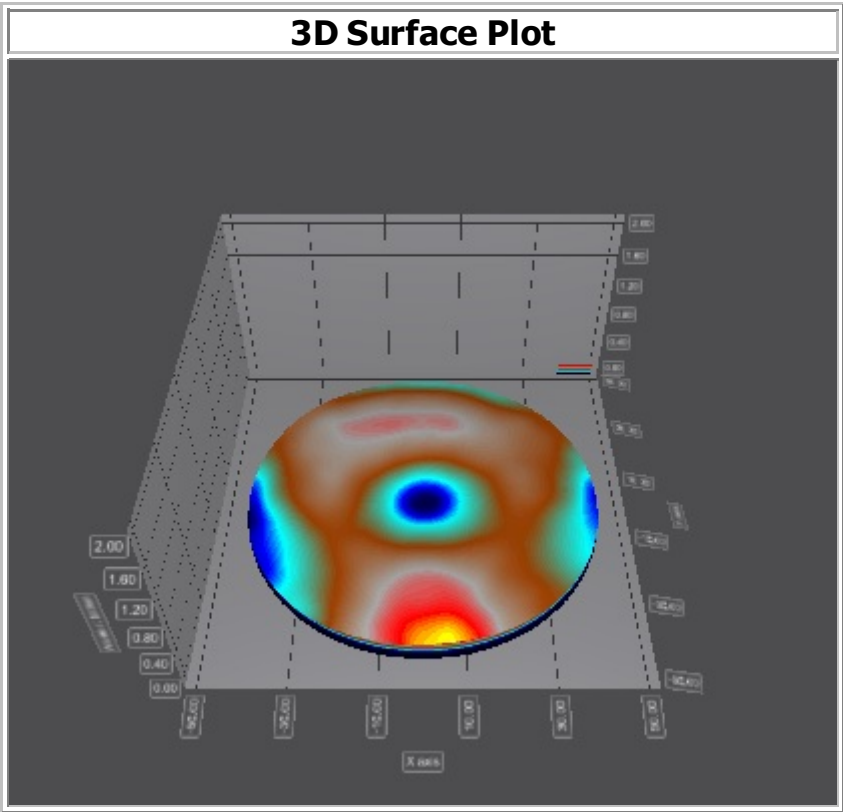
Diameter: 90.0 mm	ROC: 990.0 mm	Fnumber: 5.5
RMS: 0.025 waves at 550.0 nm	Strehl: 0.976	Best Fit CC: -0.110
Desired Conic: 0	SANull: 0.0000	Waves per fringe: 0.5 Interferogram Wave length: 532nm

Zernike Values at interferogram wavelength

Term	Wyant	RMS		Term	Wyant	RMS	
Defocus	0.089	0.051	Disabled	26	-0.002	-0.001	
X Astig	-0.036	-0.015		27	-0.007	-0.002	
Y Astig	-0.012	-0.005		28	0.000	0.000	
astig Polar	0.038	-81.037 Deg.		29	-0.002	-0.000	
X Coma	0.007	0.002		30	-0.001	-0.000	
Y Coma	-0.018	-0.006		31	0.001	0.000	
Spherical	-0.036	-0.016		32	0.000	0.000	
X Trefoi	-0.001	-0.000		33	-0.001	-0.000	
Y Trefoil	0.033	0.012		34	-0.001	-0.000	
X 2nd Astig	0.005	0.001		4th Spherical	-0.001	-0.000	
Y 2nd Astig	-0.001	-0.000		36	-0.008	-0.002	
X 2nd Coma	-0.002	-0.001		37	0.001	0.000	
Y 2nd Coma	-0.004	-0.001		38	-0.001	-0.000	
2nd Spherical	0.016	0.006		39	0.002	0.000	
X Tetrafoi	0.001	0.000		40	0.005	0.001	
Y Tetrafoi	0.000	0.000		41	-0.001	-0.000	
2nd X Trefoi	-0.000	-0.000		42	-0.000	-0.000	
2nd Y Trefoi	-0.003	-0.001		43	-0.000	-0.000	
3rd X Astig	0.000	0.000		44	-0.000	-0.000	
3rd Y Astig	0.000	0.000		45	0.000	0.000	
3rd X Coma	0.001	0.000		46	-0.000	-0.000	
3rd Y Coma	-0.005	-0.001		47	-0.002	-0.000	
3rd Spherical	-0.014	-0.005					
25	0.001	0.000					

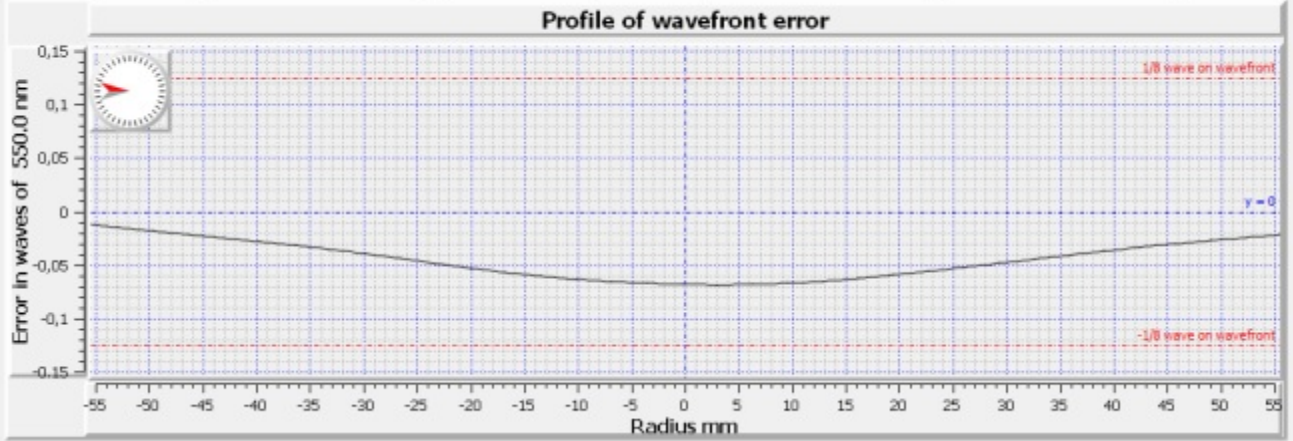


3D Surface Plot



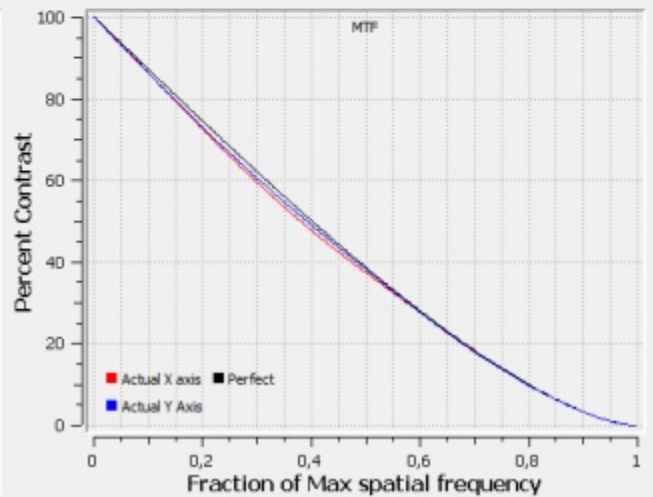
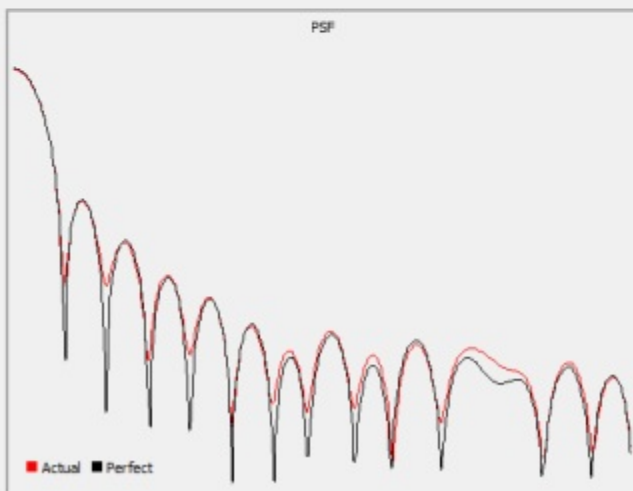
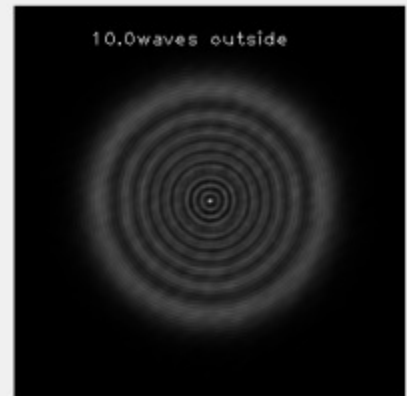
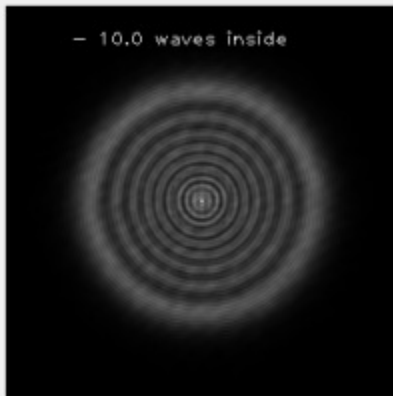
Profile Plot

Show Slope: > 1,00 arcseconds on wavefront Show in Nanometers Surface error one diameter of current wavefront 16 diameters of current wavefront All wavefronts

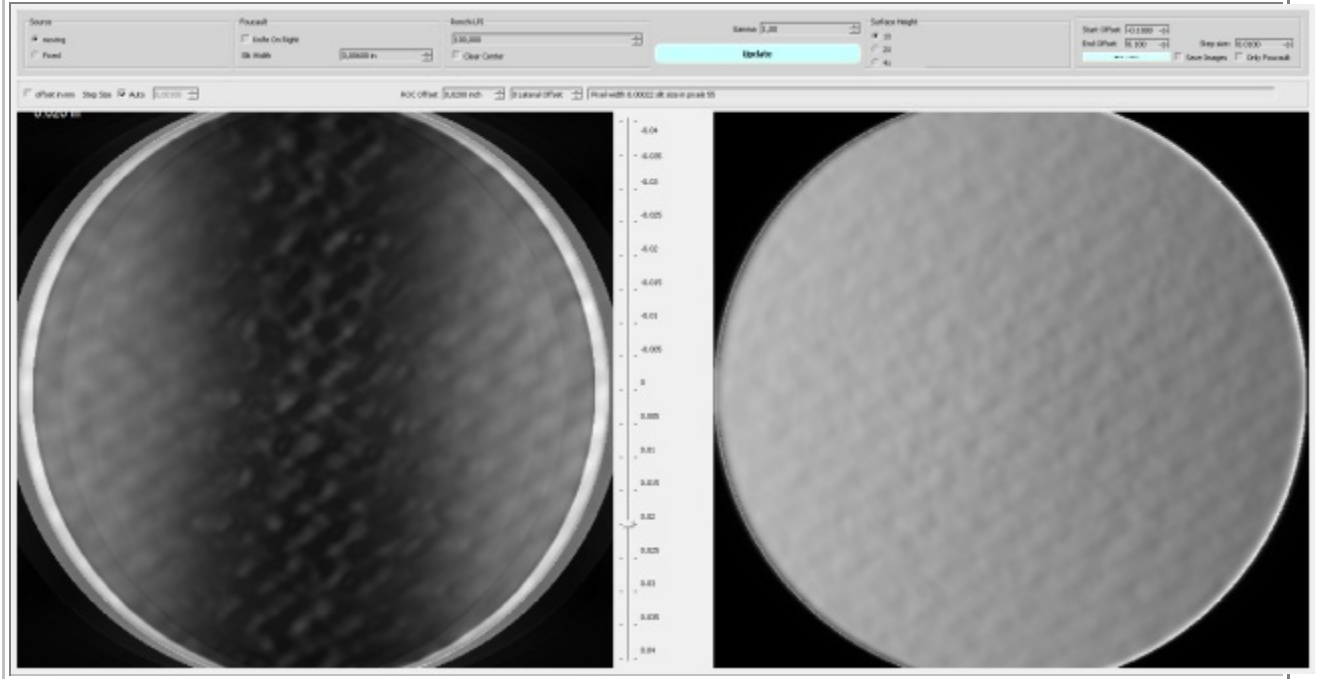


Star test, PSF and MTF

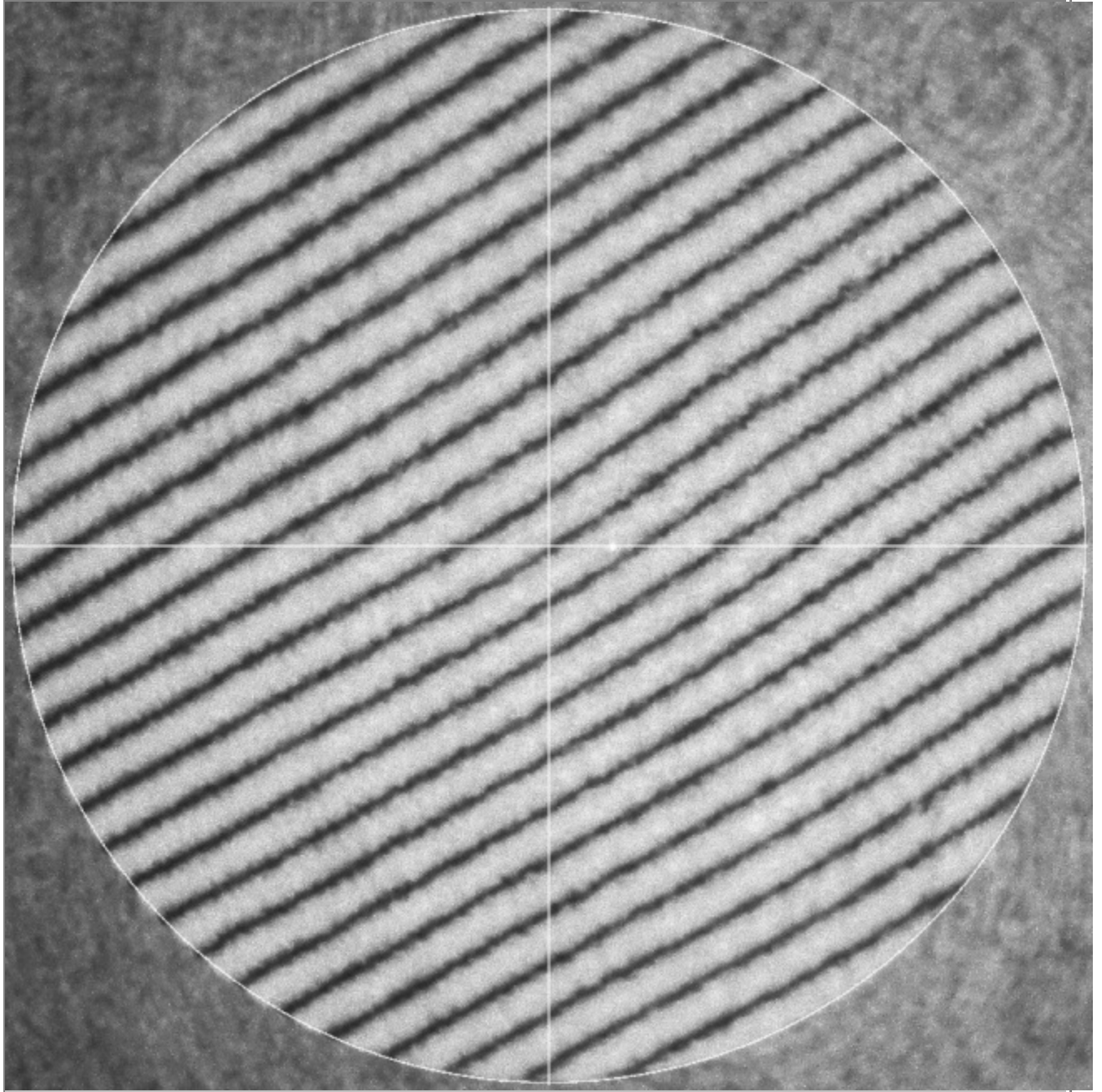
Defocus: 10,00 Image contrast (gamma) 2,00 FFT Size 1000 Magnify 4,00 Make



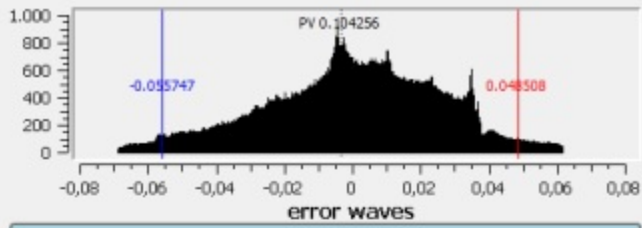
Simulated Ronchi and Foucault



typical interferogram



Pixel Histogram and Slope error



Excessive Slope in Yellow. Max height pixels in red. Min height pixels in blue.

Show min/max location Fit Surface full size Show Slopes >1,00 ArcSecs

